



SYNETICS Jersey line-up, the polled offer!

All offered bulls are A2/A2 and BB without Haplotypes and sexed available

The April 2025 proof run saw a base change in the US like every 5 years. The Jersey breed progresses globally in all criterias, showed by a decrease in most proofs of AI bulls. Our portfolio keeps being very attractive due to its complete profile, polled, BB and A2A2, selected carefully on very strong maternal lines.

90% polled

100% sexed

Jersey bulls JPI

With the April 2025 proof run, the **SYNETICS** Jersey offer stays strong and unique in the polled segment. Well known bulls kept to be very stable and a new polled edition could be found.

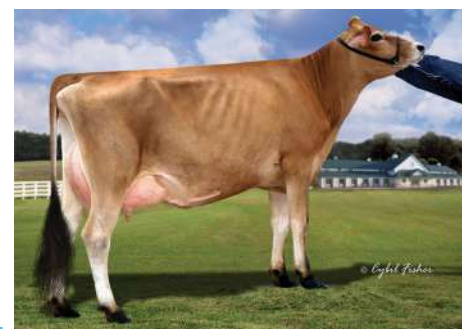
- **Shakiri P** (S. Sue P) is the latest addition to our Jersey line-up. He keeps very well at 112 JPI. He is an early Sue P son and combines high milk production with positive protein. He shows an exceptional linear profile with fantastic udder proofs, strong central ligament and longer teats.
- **Maurice PP** (S. Motor-P) remains one of the most complete homozygous polled bulls in the breed. Solid production and great udders with perfect teat placement makes him an "easy to use" bull.
- **Diamo** (S. Dilbert P) gained 11 points JPI and reached 78. This Dilbert P son have daughters pleasing the breeds, and he keeps up with amazing fertility traits : +2.8 DPR, +2.8 HCR and +3.6 CCR !!
- **Luke PP** (S. Cojack PP), the US based bull from the heart of the Convington herd is once again in the spotlight. His mother received the predicate "excellent" and is completing the 3rd generation of excellent classified cows in his pedigree. His linear profile is showing perfect Jersey body traits and very high and wide attached rear udders.



Shakiri P



Jola GP-84, dam of Shakiri P



*Heartland Santana Arlene-P EX-90
mastercow behind **Diamo**, **Maurice PP** & **Mojito PP***

This is just a small excerpt from the interesting portfolio of SYNETICS. We will shortly be presenting our current range of bulls in more detail here.