



GASCONNE



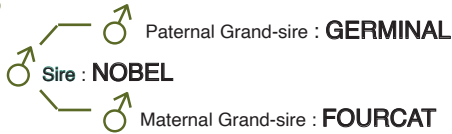
International Genetic Offer
Maternal Qualities
2024 - 2025



103
IFNAIS

106
ISEVR

119
IVMAT

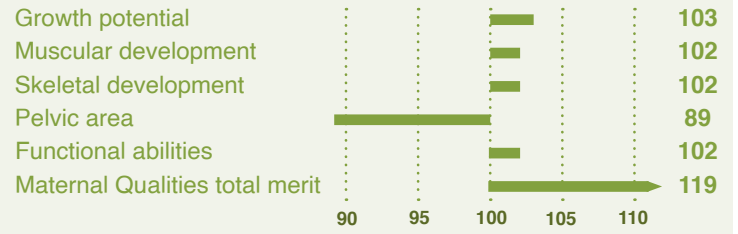


PASSY

ID Number : FR1119032655
 Birth date : 25/01/2019
 Owner : AURIVA-Elevage
 Breeder : SCEA CHAUDESAIGUE



- A COMBINATION of MATERNAL QUALITIES
- NEW PEDIGREE
- VERY GOOD PELVIS FOR EASY CALVING

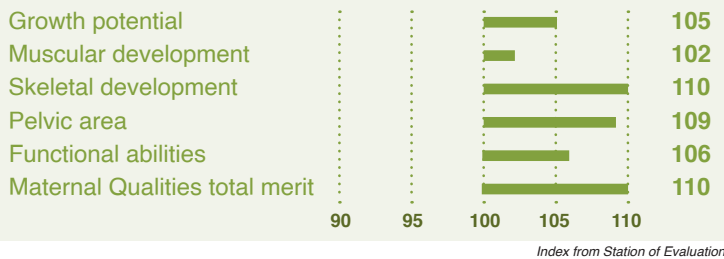


SEVEN



ID Number : FR1121006659
 Birth date : 16/01/2021
 Owner : AURIVA-Elevage
 Breeder : SCEA CHAUDESAIGUE

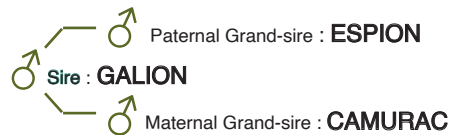
- VERY COMPLETE BULL in MORPHOLOGY
- VERY GOOD PELVIC AREA
- GOOD PEDIGREE REPRODUCTION TRAITS



110
IMOCR

110
DSste

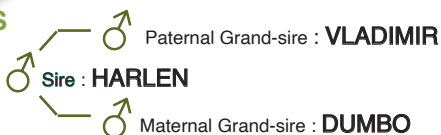
104
IABVste



104
IFNAIS

104
DMsev

113
IVMAT

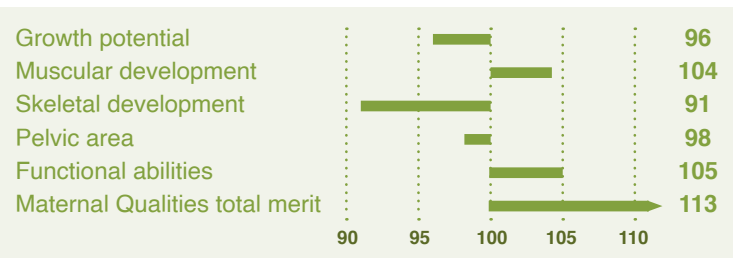


PASTOU

ID Number : FR3100589965
 Birth date : 16/12/2019
 Owner : AURIVA-Elevage
 Breeder : GAEC AB2C



- GOOD GROWTH POTENTIAL
- NEW PEDIGREE
- EXCELLENT FRONTQUARTERS



Global International GASCONNE Offer*

PROVEN BULLS

IBOVAL - EVALUATION IN FARM ON PROGENY

Sexed - male Sexed - female Polled	Bull Number	Bull Name	Sire	Grand-Sire	From birth to weaning										MH variant		
					IFNAIS	CD IFNAIS	CRsev	DMsev	DSsev	ISEVR	CD ISEVR	FOSsev	AVEL	ALAIT		IVMAT	CD IVMAT
	FR3100589965	PASTOU	HARLEN	DUMBO	104	0,88	96	104	91	99	0,74	95		113	0,4	+ / +	
	FR6515210152	RAMI	MAIL	BOLIDE	88	0,84	106	105	99	101	0,71	98		102	0,37	+ / +	
	FR1119032655	PASSY	NOBEL	FOURCAT	103	0,96	103	102	102	106	0,93	94		119	0,51	+ / +	
	FR8160018781	ORACLE	JURASSIK	GRIMPEUR	110	0,92	88	92	85	83	0,85	100		102	0,41	+ / +	
	FR3100028019	OCCITAN	DOUGLAS	TAMBOUR	90	0,94	104	114	104	112	0,87	100		101	0,48	Mh / +	
	FR6512737363	NEW LOOK	EUROPE	UMINO	100	0,89	96	101	99	98	0,81	98	105	96	0,48	Mh / +	
	FR0916814880	LOUBENS	RODIN	VENGEUR	97	0,96	118	102	112	118	0,92	92	101	96	109	0,67	+ / +
	FR3100366322	MISTER	FANFAN	CAGIRE	94	0,93	102	95	103	94	0,87	95	100	101	93	0,58	+ / +
	FR0915290266	JAPPELOUP	ESSENTIEL	VENGEUR	100	0,95	101	104	99	105	0,91	95	104	105	115	0,67	+ / +
	FR3413013160	JACCUSE	FRED	CAMURAC	97	0,93	106	94	113	103	0,84	97	97	103	104	0,56	+ / +
	FR0912241972	HONNEUR	VAILLANT	REVOLVER	98	0,9	113	98	116	114	0,82	98	91	96	101	0,68	Mh / +

BULLS IN TESTING PROGRAM

BULL EVALUATION IN STATION

Sexed - male Sexed - female Polled	Bull Number	Bull Name	Sire	Grand-Sire	Bull Evaluation in Station										MH Variant	
					IFNAIS	CD IFNAIS	CRste	DMste	DSste	AFste	QRste	OPste	IMOCRste	CD IMOCRste		IABVste
	FR3100620195	ROC	DOUGLAS	VACHERIN	92	0,78	103	105	99	108	104	95	106	0,4	106	Mh / +
	FR1121006659	SEVEN	GALION	CAMURAC	95	0,81	105	102	110	106	102	108	110	0,43	104	Mh / +

IFNAIS : Easy Calving
 CD : Index reliability
 CRsev : Growth potential at weaning
 DMsev : Muscular development at weaning
 DSsev : Skeletal development at weaning
 ISEVR : Weaning proofs
 FOSsev : Fine bones at weaning
 AVEL : Daughter calving abilities

ALAIT : Suckling abilities
 IVMAT : Total merit for maternal qualities
 CRste : Growth potential on station of evaluation
 DMste : Muscular development on station of evaluation
 DSste : Skeletal development on station of evaluation
 AFste : Functional abilities on station of evaluation
 QRste : Breed qualities on station of evaluation
 OPste : Pelvic area on station of evaluation

IMOCRste : Total merit index for morphology and growth on evaluation station
 IABVste : Total merit index for beef ability in station of evaluation

MH variant :
 • + / + : non-carrying Mh gene
 • Mh / + : heterozygous Mh gene

*For more bulls get in touch with Synthetics Export
info@synetics.world





The Perfect Fit

AURIVA - Elevage SELECTION PROGRAM

18 000 Cows
in France

9 000 Cows
in proofs controlled

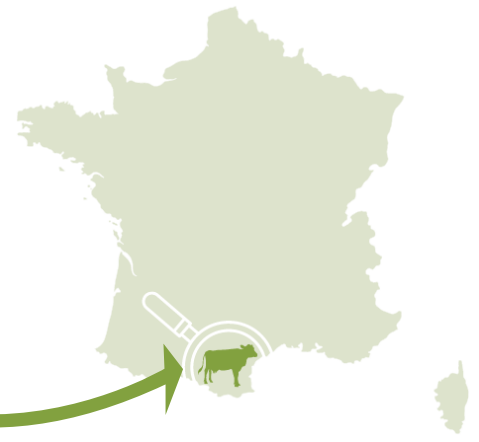
80 Bulls
in-station controlled

2 Bulls
qualified AI



GASCONNE

originates from the Pyrénées



RUSTICITY FROM MOUNTAINS !



MATERNAL ABILITIES

Altitude-proof **MATERNAL ABILITIES**

Cow size : **650 - 750 kg**

Calving ease : **97,9 %**

Average birth weight (♂ & ♀) : **39,5 kg**

Average 120 days weight (♂ & ♀) : **160 kg**

High longevity : **14,1% cows** more than 10 years



BREEDING QUALITIES

High valuation of **PASTURE**

Parasite **RESISTANCY** & warm climate **TOLERANCE**

Excellent **FEET** and **LEGS**

MOUNTAINS and **TOUGH** environment

High **RUSTICITY**



BEEF PRODUCTION

Male 210 days live weight : **262 kg**

Male year live weight : **437 kg**

Male ADG from 0 to 210 days : **1 050 g**

Male carcass weight : **319 kg** at 16,7 months

Carcass yield : **56 - 58 %**

Source : National Institute of Breeding system (IDELE) & AURIVA

