



ROUGE DES PRÉS



International Genetic Offer
Maternal Qualities
2024 - 2025



100

IFNAIS

109

IABjbf

115

ISEVR

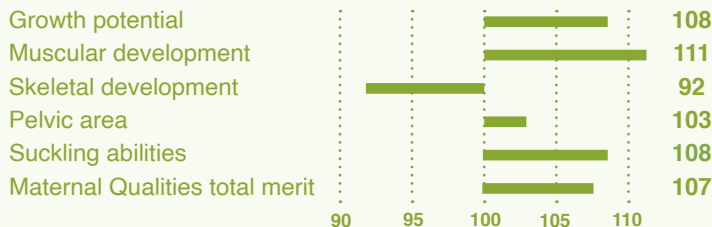


IVOIRE



ID Number : FR4941027132 Mh/+
 Birth date : 31/01/2013
 Owner : SICA
 Breeder : EARL DE LA PORTERIE

- HIGH GROWTH POTENTIAL
- VERY GOOD SUCKLING ABILITIES
- NICE MUSCULARITY (Mh/+ E226X)



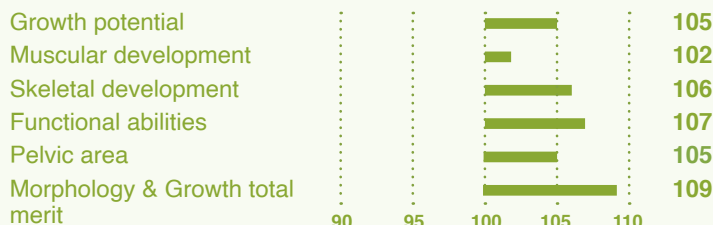
Index from Progeny Evaluation & Station of Evaluation

TALAIN

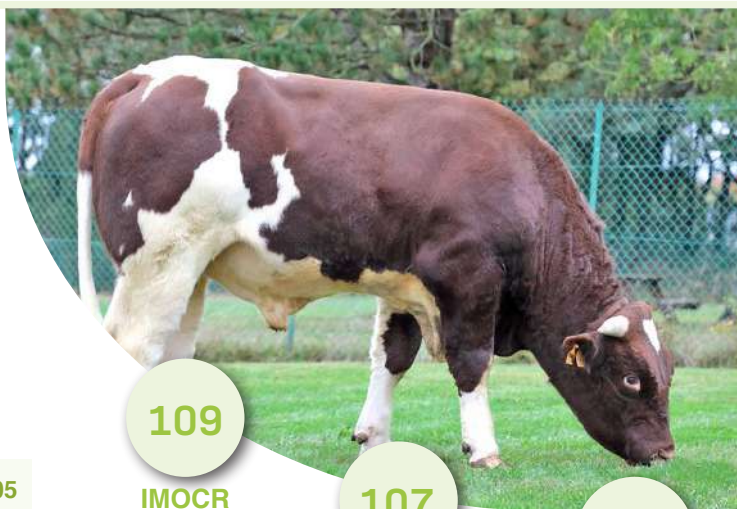


ID Number : FR7216860517
 Birth date : 30/01/2022
 Owner : SICA
 Breeder : EARL DE LA GIRARDIERE

- SKELETAL DEVELOPMENT
- MATERNAL QUALITIES
- GOOD FOOD EFFICIENCY



Index from Station of Evaluation



109

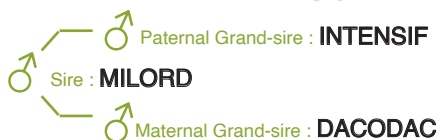
IMOCR

107

AFste

=

IFNAIS



105

IFNAIS

109

IABjbf

112

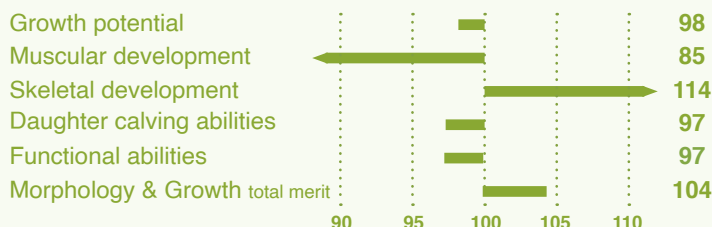
EFAci



MALIN

ID Number : FR4932420917
 Birth date : 25/02/2016
 Owner : SICA
 Breeder : GAEC ELEVAGE MENARD

- VERY GOOD FOOD EFFICIENCY
- HIGH SKELETAL DEVELOPMENT
- NICE BONE SLIMNESS



Index from Progeny Evaluation & Station of Evaluation

Global International ROUGE des PRÉS Offer*

PROVEN BULLS

IBOVAL - EVALUATION IN FARM ON PROGENY

	Sexed - male Sexed - female Polled	Bull Number	Bull Name	Sire	Grand-Sire	From birth to weaning															Beef Abilities (carcass control steers 15 to 18 months)				MH Variant		
						IFNAIS	CD	IFNAIS	CRsev	DMsev	DSsev	ISEVR	CD	ISEVR	FOSsev	AVEL	ALAIT	IVMAT	CD	IVMAT	ICRCjbf	CONFjbf	IABjbf	CD		IABjbf	FOOD EFFICIENCY
BEEFY		FR4946441318	PASTEL	MINIMUM	GRAFITI	108	0,98	104	105	107	114	0,94	104			109	0,61	103	104	105	0,76	105	+ / +				
		FR5369399736	PAPILLON	IBOUT	ADROIT	98	0,96	107	115	106	116	0,87	104			117	0,6	107	103	108	0,66	106	NT419 / NT419				
		FR4996043206	MIROIR	JET	AKATY	107	0,99	86	109	80	89	0,97	115	91	103	91	0,95	96	109	102	0,94	101	+ / +				
		FR5342371175	LOULOU	HULQUI	BRIO	109	0,94	91	99	95	93	0,85	102	96	101	94	0,69	88	98	88	0,81	106	+ / +				
		FR7243130900	JACKY	FIXE	TINTIN	83	0,98	113	106	115	111	0,95	95	99	98	108	0,89	106	110	112	0,91	127	NT419 / +				
		FR4941027132	IVOIRE	BANJO	REQUIN	100	0,97	108	111	92	115	0,92	87	58	108	107	0,84	107	105	109	0,88	109	E226X / +				
		FR4988470641	DACODAC	URANIUM	PORTO	106	0,99	106	110	96	116	0,98	102	79	101	111	0,96	93	106	97	0,97	89	+ / +				
EFFICIENCY		FR5343201164	OURASI	JURY	COCEAN	98	0,96	91	102	95	88	0,9	110	98	99	89	0,7	98	101	99	0,82	108	E226X / +				
		FR4927822520	MARQUIS	COUCOU	SPAGHETTI	99	0,98	111	100	106	115	0,96	94	101	102	115	0,83	98	91	92	0,91	110	+ / +				
		FR7224725357	LASKO	HIDOL	SULTAN	96	0,97	104	106	105	106	0,9	104	106	100	108	0,71	110	104	111	0,81	96	E226X / +				
		FR7916080608	JASON	GASCON	ADONYX	100	0,98	112	105	98	119	0,93	95	92	91	105	0,83	105	102	105	0,88	117	+ / +				
		FR3565682155	JAPOLIN	HESSIBEAU	ONYX	106	0,99	106	102	107	114	0,97	85	100	107	119	0,91	101	100	101	0,94	95	+ / +				
		FR5369398858	DOUTY	ADROIT	PAPILLON	94	0,99	107	100	99	106	0,95	98	107	99	106	0,92	113	103	114	0,93	99	NT419 / +				
		FR4453058527	DOCTEUR	UTILE	JOUJOU	93	0,98	106	100	101	103	0,96	108	110	96	102	0,92	106	106	109	0,93	106	+ / +				
		FR4980968563	DALAIN	TYRAN	VIRTUEL	101	0,97	101	95	92	99	0,92	93	89	104	96	0,87	111	100	110	0,85	97	+ / +				
TYPE		FR4932421191	RAMBO	NAVARRO	FLANEUR	105	0,95	115	105	113	126	0,86	100			124	0,56			113	0,54	100	+ / +				
		FR7911120864	ODEON	JOURAS	VERSOIR	100	0,97	110	97	104	112	0,91	91	89	97	103	0,7	112	99	110	0,81	96	+ / +				
		FR4988471353	MIC MAC	JARDON	FORBAN	102	0,98	110	98	109	113	0,92	96	104		117	0,67	103	89	95	0,76	111	+ / +				
		FR4932420917	MALIN	FLANEUR	BOUBA	105	0,98	98	85	114	94	0,94	93	97	84	79	0,82	109	98	106	0,88	112	+ / +				
		FR4930595994	ESSANDIA	CHATON	TAPON	114	0,99	91	92	82	92	0,97	96	87	89	77	0,93	93	101	94	0,95	100	+ / +				

BULLS IN TESTING PROGRAM

BULL EVALUATION IN STATION

	Sexed - male Sexed - female Polled	Bull Number	Bull Name	Sire	Grand-Sire	IFNAIS	CRste	DMste	DSste	AFste	OPste	IMOCRste	CD	IMOCRste	EFAste	MH variant
		FR5342360415	UBY	PETRUS	OWEL	+	110	103	99	97	95	106	0,46	97	+ / +	
		FR4988471908	TONTC	OCEAN	MURPHY	=	102	103	98	94	97	106	0,47	111	E226X / +	
		FR7216860517	TALAIN	MILORD	DACODAC	=	105	102	106	107	105	109	0,48	102	+ / +	
		FR7620368455	STROMAE	PAPILLON	JARDIN	=	in progress IBOVAL evaluation									E226X / NT419

IFNAIS : Easy Calving
 CD : Index reliability
 CRsev : Growth potential at weaning
 DMsev : Muscular development at weaning
 DSsev : Skeletal development at weaning
 AFste : Weaning proofs
 FOSsev : Fine bones at weaning
 AVEL : Daughter calving abilities
 ALAIT : Suckling abilities
 IVMAT : Total merit for maternal qualities
 ICRCjbf : Carcass growth on young cattle

CONFjbf : Carcass conformation on young cattle
 IABjbf : Total merit index for beef ability on young cattle
 CRste : Growth potential on station of evaluation
 DMste : Muscular development on station of evaluation
 DSste : Skeletal development on station of evaluation
 AFste : Functional abilities on station of evaluation
 QRste : Breed qualities on station of evaluation
 OPste : Pelvic area on station of evaluation
 IMOCRste : Total merit index for morphology and growth on evaluation station
 IABVste : Total merit index for beef ability in station of evaluation

EFAste : Food efficiency in station of evaluation

MH variant :

- + / + : non-carrying Mh gene
- NT419 / + : heterozygous for the variant NT419
- E226X / + : heterozygous for the variant E226X
- NT419 / NT419 : homozygous for the variant NT419
- E226X / E226X : homozygous for the variant E226X
- NT419 / E226X : carrying both variant NT419 and E226X

*For more bulls get in touch with Synetics Export
 info@synetics.world



SICA SELECTION PROGRAM

33 500 Cows
in France

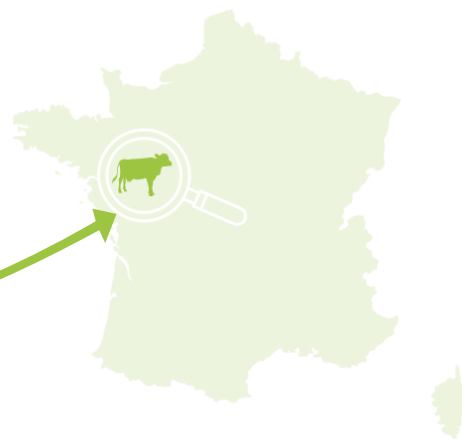
17 500 Cows
in proofs controlled

80 Bulls
in-station controlled

1-3 Bulls
qualified AI

ROUGE DES PRÉS

originates from Maine - Anjou area.



AN EXCEPTIONAL MEAT !



MATERNAL ABILITIES

GOOD MILK production

Cow size : **850 - 1 000 kg**

Calving ease : **91,7 %**

Average birth weight (♂ & ♀) : **49,5 kg**

Average 120 days weight (♂ & ♀) : **182,5 kg**



BREEDING QUALITIES

MARBLING meat

Meat **PDO certification** label (Protected Designation of Origin)

Very high **DOCILITY**

Thrive even with **COARSE FORAGE**

MH variants in the population : E226X & NT419



BEEF PRODUCTION

Male 210 days live weight : **296 kg**

Male year live weight : **505 kg**

Male ADG from 0 to 210 days : **1 164 gr**

Male carcass weight : **449 kg** at 18,8 months

Carcass yield : **59 - 62 %**



Source : National Institute of Breeding system (IDELE) & SICA

SYNETICS

Rouge
des Prés

