



PREPARING TODAY FOR THE CHALLENGES OF TOMORROW'S FARMING

SYNETICS brings the highest bulls' level to get most efficient cows, and also anticipates tomorrow by providing essential new traits for farmer's challenges and society's requirements.

SYNETICS: more than 1 million genotyped population!



Reine, dam of Tarok P and Topgun

❖ STRENGTH of SYNETICS program:

One of the world's widest genotyped Holstein population
Bulls leaders in Holstein breed : Tamack P, Real Syn ...

❖ KEY of SYNETICS innovations:

5 exclusives proofs (Génosanté, Gestation Length, Precocity...)
=> -25 days at 1st calving for +1 pts in precocity

❖ Sustain of genetic BIODIVERSITY:

Diversified high level pedigrees : Tarok P, Topliz P

- **Genomic bulls:** SYNETICS provides 16 out of 20 of the best ISU bulls.
- **Proven Bulls :** 23 bulls over 170 ISU and REL 95 are SYNETICS.
- **Milk advantage:** 15 bulls > +1500 kg and > +200 pts of ISU (Including 8 > +1800kg).
- **The Polled range** continue to grow with an increase of 25% in the number of bulls over 200 ISU pts.



THE BEST OF HOLSTEIN GENETICS

Tamack P



Dam : Ruby GP82 2y4m

GAEC des Lilas (72)

Revaux PP x Gerry x RZH Declic

- A dream for health with a combination of foot health, resistance to ketosis, udder health and reproduction.
- Optimal in body, with an excellent height +0.6 / width +0.5 ratio and wide thurls +1.9. Strong legs and locomotion +1.4.
- Irresistible in milk, A2/A2 and Polled.
- Only available as sexed semen.

A star is born

ISU 231
Milk +1535
Repro +3,9
RLI +1,1
Keto +0,8
Mast +1,9
FLC +1,4
UDC +2,2

AA A2/A2





TOP SEGMENT VOLUM

Real Syn



Real Syn

Ruprecht and SYNETICS (Germany)

Rover PK x Adaway x Huey

- Phenomenal in production with 175 kg CFP.
- Impeccable udder, with an excellent combination of attachments, teats and udder cleft.
- Exceptional in foot health, especially resistance to infectious lesions such as dermatitis +1.5.
- Only available as sexed semen

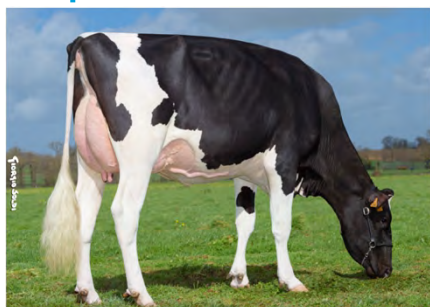
The “Real” international leader

ISU 223
RZG 171
TPI 3056
Milk +1859
INEL +86
F% +4,9
Repro +2,4

AB A2/A2



Topliz P



Dam : Rozenn

GAEC les Marais (35)

Rairiz x Gerry x Adagio P

- The combination of udder, legs and strength make him an essential reference for type +4.0.
- Your genetic asset for dermatitis RLI +1.4 for greater comfort in your daily routine.
- Efficient milking speed and milk production.
- Also available as sexed semen

The master builder

ISU 196
Milk +1393
UDC +2,6
ST +1,6
CW +1,1
FLC +2,5
Repro +1,5

AB A1/A2



Tips



Dam : Riquita VG85 3y00m

EARL Petton (29)

Key Sound x Lavonte x Westcoast Galahad

- Stunning in milk production and A2/A2 with positive components (TP +1.8 & TB +0.3) and 146 kg of useful CFP.
- Very strong udders for such a high level of milk, combined with good feet and legs.
- Highly functional to gain more longevity +3.1.

Milk like it's raining

ISU 215
Milk +1823
UDH +1,5
Repro +2,1
FLC +1,6
RUH +2,3
DF +1,3

AB A2/A2





TOP SEGMENT VOLUM

Tomatene P



Dam : Ruca Tene GP81 2y10m

GAEC Bodier (44)

Romazy x VH Alfonsp x Keeper P

- Powerful, strong in feet and legs with healthy feet. He also has udders with a very good udder cleft / position and rear teat length ratio.
- **Ideal to improve your dairy performance** in terms of both milk and P% +1.8.
- **Polled, A2/A2**, he will produce resistant cows to clinical mastitis +1.8.



Power up

ISU 198
Milk +1534
BDC +2,5
IS +3,3
TL +1,4
FLC +1,6
UDH +2,2

AB A2/A2

Tiamor



Dam : Sahara GP83 2y4m

GAEC de l'Avenir (56)

Freelancer x Poulidor x Sammy P SW

- A reference in udder and particularly in attachments for such a high level of milk.
- A high milk yield with 133 kg of useful CFP and a positive milking speed of +0.5.
- Early daughters +3.4 with a modern frame and wide, well-sloped rumps.



So irresistible

ISU 203
Milk 1505
P% +1,6
F% +1,2
UDC +3,7
RLI +1,3
FerC +2,0

BB A1/A2

Saplomb



Saplomb

GAEC de la Pressonniere (79)

Saturn Son x Massive x Jetset

- He arrives in FERTIMAX, your fertility booster, at a guaranteed minimum of +8 pts compared with the INNOVAL french reference.
- A rare level of udder for such a level of milk. Particularly interesting for improving udder cleft +1.0.
- **Perfectly aligned legs +2.0** for greater longevity.
- Also available as sexed semen.



The dairy referent

ISU 200
Milk +1963
FLC +2,1
FUA +1,6
RUA +2,1
UDH +1,8
DF +1,3

AB A1/A2



TOP SEGMENT AUTONOM

Tarok P



Ragnarok P x Garrett x Jazz

- Fast, efficient and durable : the winning package for all breeding systems.
- The perfect type of cow, thanks to its ultra-complete range of morphological and functional traits.
- The comfort of polled to complete the package.

< Dam : Reine VG85 - GAEC du Moulin and Cows (44)



The conquest of success

ISU 206
Milk +1206
MS +0,6
Mast +1,6
Type +3,0

AB A1/A2

Trisco P



Rizzo P x Yearwood x Norland

- Your ideal partner for milking comfort thanks to udders that are highly adapted to robots.
- A moderate, modern frame.
- The addition of polled and +0.5 milking speed.

< Dam : Rieuse – GAEC Bodin (35)



Milking robots will love him

ISU 191
Milk +1014
F% +5,4
UDC +2,5
FerC +2,1

BB A1/A2

Tannat Red



Networkred x Jayvano Rf x Matt Rf

- Original pedigree, easy to use on the red and black population.
- A fertility specialist for both cows and heifers.
- High longevity, precocity and very good teat length (+1.4).

< Sire of Tannat Red – Breeder : GAEC de l'Aulouze (64)



Red suits him so well

ISU 204
Repro +3,2
UDC +2,6
PR +3,2
PL +3,1

BB A1/A2

Sherlock



Pepsi Rf x Alaska Red x James Bond

- Optimised type adapted to robotic milking and daughters with dairy capacity.
- Fast milking speed +1.1 without neglecting udder health +1.1.
- Available in FERTIMAX, your fertility booster!

< Dam : Orge VG86 – GAEC Elevage Louxor (22)



Essential for milk production

ISU 207
P% +2,7
Milk +1039
PR +3,0
Repro +3,1

AB A2/A3



TOP SEGMENT PATURE +

Topgun



Rayban x Garrett x Jazz

- The perfect balance components / milk gives him a very high level of total solids at 141 kg and A2/A2.
- Rare in the height (-0.1) / width (+1.5) ratio, which makes him very attractive for bringing robustness.
- Impeccable feet and legs for greater longevity.

< GD : Poker GP83 – GAEC du Moulin And Cows (44)



Pilot your success

ISU 209
P% +3,5
F% +2,7
Milk +1376
FLC +2,1
BB A2/A2

Troscoff



Roscoff x Luster P x Profit S-S-I

- A combination of all the functional criteria, particularly udder health +4.0.
- Remarkable components: +3.1 P% & 4.4 F%.
- Perfect for use in a grazing system with good legs and healthy feet.

< Dam : Rustique P GP83 – EARL des Peupliers (49)



Health in all its form

ISU 224
RLI +1,0
RLNI +1,1
Repro +2,6
MAST +3,3
AB A2/A2

Rios P RDC



Ridercup x Solitair P x Polo P

- Atypical and particularly interesting milking ratio +1.0 and udder health +1.6.
- Frame and feet well suited to the most demanding systems.
- High udder +2.9 and well attached to the body.

< Dam : Ella P VG87 – J. et P. Behrens (Germany)



The perfect combo: Milking & Health

ISU 213
Repro +2,7
FA +1,0
RLI +1,2
FLC +1,3
BB A1/A2

Tiguan



Roglic x Gerry x RZH Declic

- Remarkable locomotion, feet and legs, much appreciated in cubicles and on pasture.
- Impressive components (+4.2 P% & +7.2 F%), A2/A2 and 125 kg CFP.
- Perfectly balanced frame.

< GGD : Myrtille VG86 – GAEC des Lilas (72)



Added value is on the move

ISU 203
FLC +2,3
RLI +1,1
Type +3,4
UDH +1,9
AB A2/A2



TOP SEGMENT +VALUE

Topker



Perry Pk x Spark Red x Applicable

- Out of the Blackstar Raven EX-95 family with an average of 91 pts over 7 generations.
- Remarkable components and functional proofs.
- **Must-see in type** with very solid udders and feet and legs with excellent foot.

< Dam : Peaches VG86 – GAEC de Kreis Ker (29)

On the Top to last

ISU 206

UDC +2,8

BDC +1,7

FLC +1,8

P% +3,1

AB A1/A1



Aeronaut



Aerosmith x Freemax x Benz

- Top type in 3 different countries from the Beltone Gale EX-90 family.
- Ultra-fertile and early daughters +3.3 .
- Remarkable components (+4.1 P% & +5.2 F%) and A2/A2.

< Aeronaut – SYNETICS Germany GmbH

Expand your horizons

ISU 211

Type +3,9

RZE 144

PTAT +2,67

Repro +2,7

AB A2/A2



Tavernier



Rhumraisin x Gerry x Windmill

- Very high components along with excellent milk level +1142.
- Perfect type in all traits.
- Top udder health, feet and fertility.

< Dam : Reponse – Gaec des Charmilles (41)

A key player in the field

ISU 215

P% +2,8

F% +4,0

Type +3,2

Repro +2,4

AB A2/A2



Trustic P



Rayban x Luster P x Profit S-S-I

- Phenomenal components associated with milk propelling him to a level of 169 kg of CFP .
- **Modern, well-balanced formats** thanks to his height / width ratio and dairy aspect.
- Polled and A2/A2.

< Dam : Rustique GP83 – Earl des Peupliers (49)

The "crème de la crème"

ISU 204

P% +4,9

F% +8,3

Milk +966

UDH +1,5

AB A2/A2





Daughter proven bulls on french base

Poulidor



Newstar x Baldur x Drance Isy

- At 191 ISU, he remains very stable compared to his first indexation at 209 pts in 2020.
- His daughters are already making a name for themselves, both in the herd and in the ring.
- Perfectly balanced in all positions.

< Daughter : Sahara GP83 – GAEC de l'Avenir (56)

Reach the summit

ISU 191
INEL +55
Type +2,9
UDH +1,2
Repro +1,8
AB A2/A2



Solito Red



Salvator Mr x Atwork x Detox

- Fantastic in udder, confirmed by his daughters at 83.8 pts and exceptional in FLC +2.1.
- Exceptional maternal family with Khw Goldwyn Aiko EX-91.
- N°1 Red ISU in the world, proven

< Daughter : Desire (Germany)

The most show RED

REL 94
Type +3,5
UDC 2,6
Repro +2,6
ISU 185



BE A1/A2

Nuaces



Luaces x Indeed x Galosh Isy

- 3587 daughters and still performing well in all compartments.
- High milk and components (+1.7 P% & +2.2 F%).
- Perfect udder in robot and dam classified EX-91 at 7a1m.

< Dam : Laurina VG88 – GAEC la Pierre Cochee (41)

The complete package in proven bulls

REL 95
INEL +40
UDH +1,7
Repro +1,7
Type +1,9



AB A1/A2

Ogolf Rf



Gymnast x VH Kasi P x Aikman

- Very easy to reuse on cows and very complete, to sire productive and long-lasting cows.
- Classification of promising daughters: Average 82.5 udder and 82.3 milk capacity.
- Very productive daughters +1246 milk - 98 kg CFP.

< Daughter : Sibeth – GAEC du Saudrais (22)

The way of confirmation

REL 94
ISU 181
Type +2,9
INEL +52
Repro +1,2



AB A1/A2