



## WHAT'S NEW AFTER AUGUST 2023 PROOF RUN?

With the August breeding value estimation, the introduction of the RZorganic was completed. This new index was developed in cooperation between the Bundesverband Rind und Schwein and the ÖTZ (Ökologische Tierzucht Österreich) to identify bulls that are particularly suitable for organic or extensive milk production. All Holstein animals calculated in the RZG system are now given this breeding value, which takes particular account of longevity, milk content and health, but gives a negative weighting to milk yield.

The SYNETICS breeding program presents three leading bulls. Real Syn dominates the list of black and white genomic bulls as the current number one by RZG, while Topstone defended his pole position by RZG among the black and white daughter-tested sires. The trio is completed by Solito Red as RZG leader among the daughter-tested red and white bulls.

The outstanding quality of the range is underlined by the top rankings of numerous other sires. Eleven of the TOP-20 black and white genomic RZG bulls and seven of the TOP-10 RZ€ bulls are currently standing in SYNETICS stables.



## DAUGHTER PROVEN BULLS ON GERMAN BASE

### Oh DG Topstone EX-90

List leader RZG bull from Prudence EX-95 family



#### Topshot x Rubicon x Aikman

- Golden Oaks Mark Prudence EX-95 Family
- No. 1 RZG Germany and Interbull for one year now
- With further daughters again increase in conformation breeding value and daughter fertility

< Daughter: Godja VG-86



**RZG 154**  
**RZ€ 2250**  
**Milk +1828**  
**RZR 110**

**BB A1/A2**

### NH Solito Red EX-91

Unique, the No. 1 RZG and RZE at the same time



#### Salvatore x Atwork x Detox

- Kamps-Hollow Altitude-ET EX-95-Family
- Extra class for conformation and udder heredity
- Extremely good health and livability values

< Daughter: Fina VG-85



**RZG 143**  
**RZE 140**  
**Fett-% +0,18**  
**RZN 136**

**AB A1/A2**



## NEW GENOMIC TOP BULLS ON GERMAN BASE

### Real Syn

No. 1 RZG bull of the world



#### Rover x Adaway x Huey

- The world leader in RZG with 133 RZE
- All health traits at the highest level in combination with light calving ease

**RZG 171**  
**Milk +2010**  
**RZ€ 2981**  
**AB A2/A2**

### WKM Rockwell

Convinces in all functional and health characteristics



#### Rover x Calvin x Padawan

- Modern combination of performance and components
- Healthy mix of RZS 116 and RZD 105
- High values for RZE 134

**RZG 162**  
**RZE 134**  
**RZR 112**  
**AB A2/A2**

### Milosch

Fertility and health to perfection



#### Migel x Bali x Gymnast

- Imposing and flawless feet & leg breed value
- Superior value for daughter fertility
- High values for livability & health

**RZG 158**  
**Funda. 125**  
**RZR 124**  
**AA A2/A2**

### Saiko

Milk and components at the highest level



#### AltaMagnifique x Pursuit x Medley

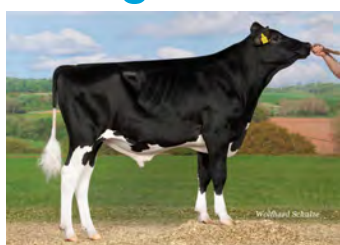
- Flawless linear with perfect body traits
- Healthy ratio of RZD 97 and RZS 118
- High milk components

**RZG 158**  
**RZ€ +2719**  
**Milk +1561**  
**AA A1/A2**



### Glasgow

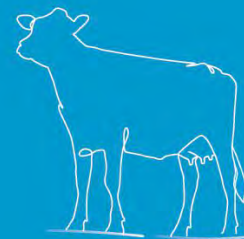
The complete package of performance and functionality



#### Gladius x Lavonte x Yoyo

- Perfect body characteristics
- Strong central ligament and longer teats
- Health and livability at the highest level

**RZG 158**  
**Fett% +0,44**  
**RZGes 131**  
**AB A2/A2**



## NEW GENOMIC TOP BULLS ON GERMAN BASE

### SYN Fox PP



Freewood P x Solitair P x Mission P

- Perfect feet & leg features
- High RZD 121 combined with RZS 103
- Solid milk volume combined with high components

Homozygous polled milk bull



**RZE 120**  
**Milk +1224**  
**RZD 121**

**BE A1/A2**

### HaH Sir PP RDC



Signal P x Solitair P x Apoll P

- Solid milk quantity +1007kg with high components
- Flawless, modern linear with angled hindlegs
- Healthy combination of RZS 113 and RZD 103

Homozygous polled all-rounder



**Fett% +0,23**  
**Eiw.% +0,13**  
**RZS 113**

**AB A1/A2**

### H.O Cool Red



Camden x Starello x Pace Red

- High milk volume with clearly positive components
- Very well-balanced linear profile
- Ideal udder for automatic milking systems

The Red & White complete package



**RZG 154**  
**RZE 123**  
**RZN 122**

**BB A1/A1**

### NM Random Red



Ranger Red x Salvatore x Debutant

- Heavy type linear without error
- Modern feet & leg inheritance with angle in hind leg
- Components and performance for red & white breeding

Total package from full sister to Spark Red



**RZE 126**  
**Fett% +0,22**  
**Milk +1189**

**BB A1/A2**

### SHA Maz Red PP



Mc Donald P Red x Solitair P x Pace Red

- Solid performance +704 with high content +0.37 fat% and +0.08 protein%.
- Outstanding conformation with very good feet and legs
- Udder heredity par excellence

Conformation sires with slightly different pedigree



**RZG 147**  
**RZE 150**  
**Fett% +0,37**

**AB A1/A2**