



## WHAT'S NEW AFTER THE APRIL 2023 PROOF RUN ?

### RELEASE OF A NEW SYNETICS TRAIT

#### PRECOCITY OF HEIFERS (PR)

#### GAIN UP TO 25 DAYS OF AGE AT 1<sup>ST</sup> IA IN ONE GENERATION !

SYNETICS provides a new genomic trait to improve the age at first calving up to 25 days in only one generation using SYNETICS best bulls.

*Available in the French evaluation !*

#### 25 DAYS :

Which profits on group of  
100 cows & 35 heifers / year ?



Profit up to :  
**2000 € / year**

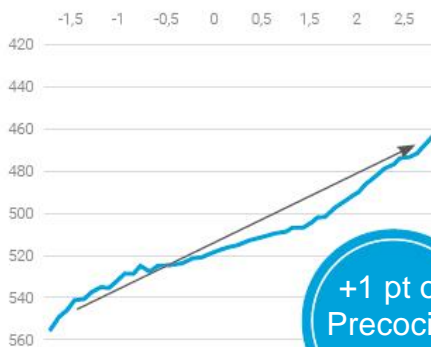


Up to : **26 hours  
of work saved**



Up to : **-1,5%  
carbon footprint**

#### Relation between Precocity trait and age 1<sup>st</sup> AI



**25 days gained**  
at 1<sup>st</sup> AI and at 1<sup>st</sup> calving

#### TOP SYNETICS SIRES



**+3,0 in  
PR trait**

**25 days gained**  
at 1<sup>st</sup> AI for his daughters  
compared to the population of  
heifers (PR +1,0) born from 2017  
to 2021

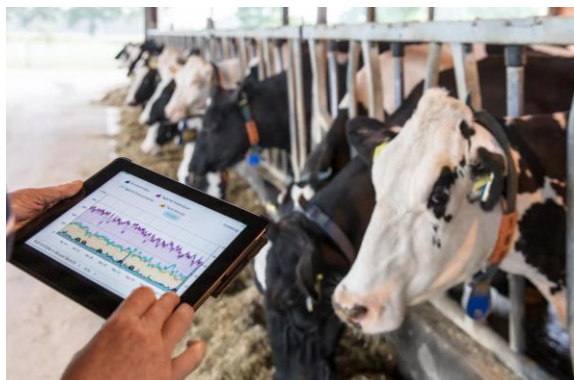




## RELEASE OF A NEW GERMAN TRAIT

### PERSISTENCY OF LACTATION (RZPersistence)

**IMPROVE YOUR ANIMALS' ABILITY TO CONTINUE PRODUCING MILK FOR AS LONG AS POSSIBLE !**



*Available in the German evaluation !*

This April 2023, for the first time, the breeding value **RZPersistence** is released. Persistence is the ability of milk production to be maintained throughout the lactation period and is becoming increasingly important due to the strategy of longer calving intervals. With this breeding value, animals that themselves or their offspring show a higher willingness to perform in milk in the lactation period up to 400 days are positively highlighted.

**Good to know :**

The top 25% of KB bulls born 2013 - 2016 averaged +118 and the bottom 25% averaged +95 for the trait RZPersistence.

**SUMMERLAKE** : TOP sire at +126 RZPersistence



## SYNETICS IS LEADER OF THE EUROPEAN RANKINGS

### SYNETICS MAJOR PLAYER OF THE RZG RANKING

SYNETICS holds 5 bulls in the TOP 10 Genomic RZG : SAIKO, CAPITOL, RAINOW, SOLIXOR and FOLLOW-ME

RAINOW, SAIKO and GENTRY : 3 bulls in the TOP 5 RZ€  
COVERBOY and CAPITOL join the TOP 10 RZ€

TOPSTONE #1 of the Proven RZG with +156 RZG  
SUMMERLAKE and TOPMODEL follow him in the TOP 30

TRUST RED in the TOP 10 Genomic RZG for the R&W  
FEIT RED P follows him in the TOP 15

SPARK RED and SOLITO RED : TOP 30 Proven RZG for the R&W



## GERMAN GENETIC BASE CHANGE

Every year in Germany during the April proof run we process to a genetic base change. All breeding values are set to a mean of 100 for relative breeding values and 0 for milk traits for 4 to 6 year old cows of the respective breed. Thus, 100 or 0 always corresponds to the mean of the current cow population. The basis for all breeding values in 2023 are now cows of the respective breed born between 2017 and 2019 with own performance in the respective trait (previously cows born 2016 - 2018). The effects of the base shift on the breeding values are shown in the table below :

	RZG	RZM	Milk	F%	P%	RZE	Type	Body	F&L	Udder	RZN	RZR	RZKm	RZS	RZD
<b>B&amp;W</b>	-4,9	-3,4	-104	-0,01	-0,01	-2,3	-0,9	+0,1	-0,8	-2,3	-2,4	-0,7	-0,9	-1,5	0,0
<b>R&amp;W</b>	-4,1	-2,8	-103	0,00	0,00	-2,4	-0,9	+0,3	-1,0	-2,3	-2,0	-0,7	-0,4	-0,8	-0,5

## TOP RZG BULLS AVAILABLE

*Small overview of some of them :*



**CAPITOL** offers an incredible level of A2A2 milk and a high longevity to his daughters. This CARENZO son is particularly high in RZ€ and he provides very good fitness traits. He ensures an excellent locomotion thanks to a great hoof health.

**SAIKO** is available in conventional and sexed semen. This MAGNIFIQUE son combines high milk yield with positive ingredients. He provides ideal hind leg angulation, with wide, sloping pelvis and almost neutral size inheritance with positive strength that complete his profile. His pedigree goes back to the well-known Octoberfest daughter Seagull-Bay My Octavia VG-86.

**FOLLOW-ME** provides a solid milk yield, excellent contents and high values for RZS and RZD. He shows characteristics that are absolutely in line with the time. In conformation he can more than convince and especially improve the feet and legs significantly. In addition, he combines a negative size inheritance with positive strength and width with ideally positioned pelvis. This FOREMAN son comes from the family of the well-known WKM Ladyliz VG-85.

**ADWIN** provides a very high A2A2 milk combined with excellent health traits, fertility and longevity. He offers perfect udders with strong ligament and attachments and very good feet and legs.





## SYNETICS LEADER OF THE ISU RANKING

SYNETICS holds the #1 ISU worldwide : FOLLOW-ME at +226 ISU  
6 bulls of the TOP 10 ISU belong to SYNETICS

6 bulls > 220 ISU and 37 > 210 ISU belong to SYNETICS  
Among them : 20 are already available in conventional and/or sexed semen

#1 POLLED : SURIBAY P at +224 ISU  
#1 RED PP : SHO RED PP at +192 ISU  
#1 Milk > 210 ISU : SANPEY at +2157 kg  
#1 INEL > 200 ISU : SALAH at +104  
#1 Type > 210 ISU : RAMSES RF at +4,3  
*All available in conventional and/or sexed semen*

NILWAY is the #1 PROVEN sire in ISU at 95% Rel. and #1 in Type at +4,1

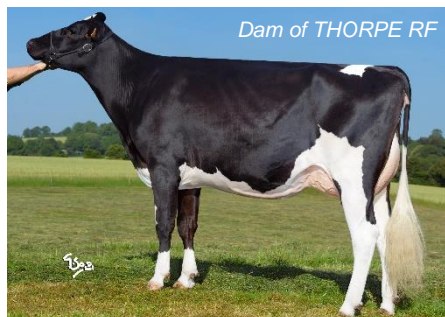
## FRENCH GENETIC BASE CHANGE

Every year in France during the April proof run we process to a genetic base change. Indeed, genetic evaluations are expressed as a deviation to a group of females. The 2023 reference population includes registered cows born from 2015 to 2017. The male and female proofs released on April 5<sup>th</sup> have therefore varied as a result of this change :

ISU	INEL	MILK	F‰	P‰	FERTI	UDH	LGV	TYPE	UDC	FLC
-7,5	-3,4	-56	-0,12	-0,14	-0,13	-0,15	-0,10	-0,22	-0,18	-0,07

## 20 NEW BULLS IN THE ISU OFFER

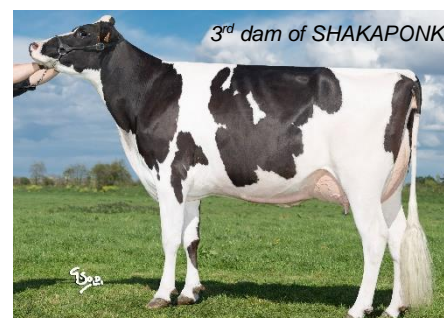
*Small overview of some of them :*



Dam of THORPE RF

**THORPE RF** is our new champion in production that combines milk (+1515 kg), fat (+0,19%) and protein (+0,09%). This ROMAN RF son perfectly combines health and fertility traits (+2,2) as well as calving ease (92%). He offers optimal udders with a strong ligament (+0,9), excellent attachments and perfect teat placement for easy milking. He transmits a modern size and excellent feet and legs (+1,8). He comes from a solid French family in production and longevity. He is available in sexed semen.

**SHAKAPONK** is the leader of his generation in type (+4,2). He provides a particularly balanced profile, a modern body, a perfect udder with excellent attachments (+2,1) and an exceptional locomotion (+2,6). This PINKFLOYD traces back to the famous cow Addison Sabrina EX-92. He transmits high fat (+0,39%) and protein (+0,27%) contents with a good milk level (+906 kg) and a healthy udder (+2,3). He is available in sexed semen.

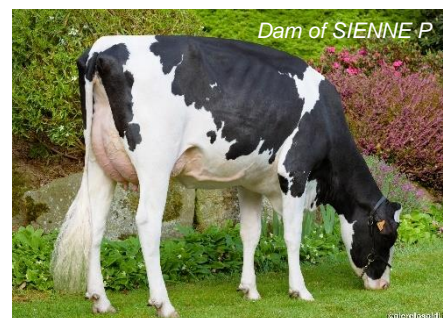


3<sup>rd</sup> dam of SHAKAPONK



**FRANCESCO** offers outstanding fat (0,49%) and protein (0,47%) contents, combined with a good level of milk (+967 kg). This FOREMAN son from comes from the Sully Shottle May EX-91 family. He stands out with an excellent fertility trait (+2,2), a good milking speed (+0,6) and easy calving (92%). He combines excellent udder attachments, very good teat placement with a positive length (+0,7). He provides a moderated stature (-0,2) with a lot of chest width (+0,8) and an exceptional locomotion (+1,8).

**SIENNE P** is available in conventional semen. This heterozygous polled bull offers a particularly balanced profile with a high ISU (+212). This PACOLINE son brings a different pedigree that makes him easy to use in mating. He combines a perfect production with excellent functional traits and especially the fertility (+2,8) and the udder health (+2,3). He transmits strong feet and legs (+1,6), a modern and balanced body and very good udder attachments to last in the time.



## SYNETICS WELL REPRESENTED IN THE EUROPEAN RANKING

**PFI** : 4 bulls in the TOP 20 Genomic and 2 bulls in the TOP 30 Proven

**ICO** : 4 bulls in the TOP 20 Genomic and 3 bulls in the TOP 20 Proven

**NVI** : ARRIVAL is in the TOP 20 Genomic B&W and LENOVO is #3 of the Proven B&W

TRUST RED is in TOP 30 Genomic R&W and SOLITO RED is in the TOP 10 Proven R&W

**NTM** : 2 bulls in the TOP 30 Genomic

**PLI** : 3 bulls in the TOP 50 Genomic

**PFT** : 7 bulls in the TOP 50 Genomic whose one in the TOP 20

## SYNETICS OFFERS A WIDE US OFFER

**12 bulls > 3000 GTPI** in the US line-up whose 7 already available

**3 bulls > 1100 NM\$** whose 2 already available

In total the US offer of SYNETICS is :

- 47 bulls > 2900 GTPI
- 19 bulls > 1000 NM\$
- 17 Polled bulls > 2500 GTPI (whose 9 PP) and with SPEEDY P > 2900 GTPI
- 16 Red bulls > 2600 GTPI and RANDOM RED > 2800 GTPI

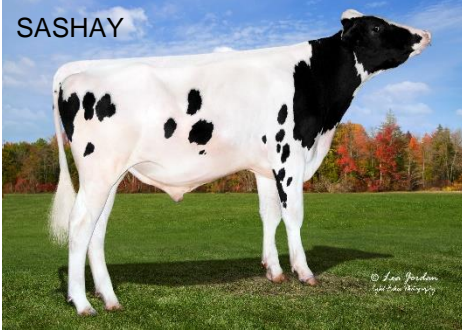
SUMMERLAKE and LENOVO : TOP proven bulls at +2906 and +2898 TPI



## 7 NEW BULLS IN THE US LINE-UP

SASHAY, TINDER, SOULMAN, BOGEDA, BIGPACK, BIGBAND, SMITH P

SASHAY



**SASHAY** is coming in conventional and sexed semen. This ZEOLITE son comes from the family of Seagull-Bay Manat Mirage-ET EX-90. He offers a very balanced profile with a good combination of milk (+1245 lbs.) and fertility (+0,9 DPR). His daughters will have long productive life (+7,1), a balanced body and functional udders.

**TINDER** is now available in conventional semen and soon in sexed semen. This ZOOTY son offers an outcross pedigree that makes him easy to use in mating. He offers a very high NM\$ level (+1108) and he transmits a good level of milk (+1338 lbs.) and a high productive life (+6,6). He provides a moderated stature, adapted for grazing systems. Finally, he transmits well-attached udders and a strong ligament.

**SOULMAN** is also available in conventional and sexed semen. This very good sire comes from the family of Bru-Dale Zeronica-ET VG-85 like POKEMON and SOFTBALL. He stands out in many evaluations such as in ISU (+203) or in RZG (+155). He provides a good level of milk (+1284 lbs.) and excellent type (+1,72) and udders (+1,73). His daughters will be strong with perfect udders and feet and legs.

**BIGPACK** is coming in conventional semen. This very good sire comes from renowned family of Welcome Outside Golden-ET EX-90. He provides an excellent package of milk (+1259 lbs.) and fertility (+0,9 DPR). He is the highest of our line-up in productive life (+7,4) and he offers easy calving (+1,8). He transmits medium stature and functional udders (+1,18).

SOULMAN

